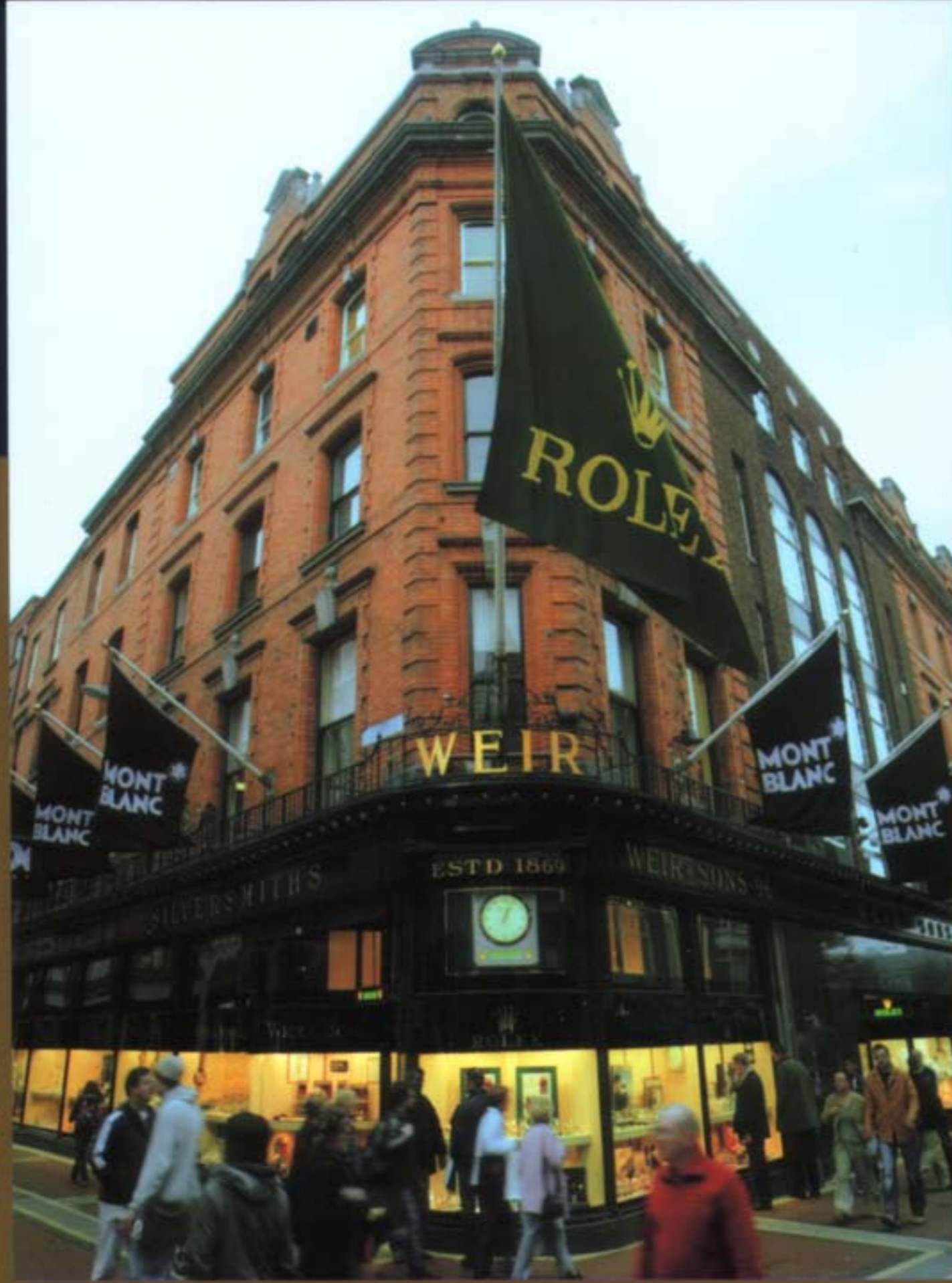


WEIRstyle





PARADISE FOUND



Ever since Christopher Columbus set foot on the island in the fourteenth Century, Grenada has seduced visitors with its spell-binding beauty.

The mountainous island with its cascading rivers, lush rainforests, breathtaking lakes and stunning beaches is as close to the dream of paradise as most of us will ever come. Add to that the fragrant aroma of the island's famous nutmeg trees, and you will find your senses completely overloaded.

With such breathtaking beauty, Grenada was always destined to become a haven for discerning travellers in search of a tropical paradise. Mount Hartman Bay Estate nestles on its own private peninsula on the southern-most coast of Grenada. From its hillside position, this spectacular 2.5-acre waterfront private retreat within the chic resort area of Lance-aux-Epines commands grand views across the idyllic bay. The colonial feel that pervades much of the Caribbean is still there but Mount Hartman Bay Estate produces a few architectural surprises that set it apart.

The house combines grand antique vernacular style with modern design to create a spacious yet welcoming ambience. In places, the architecture doffs its wide-brimmed panama hat to the famous Spanish architect Gaudi, while quirky design features such as an internal waterfall that cascades into the reception room and along the main staircase further add to the character of the house. Movie buffs may sense distinct hints of James Bond villain in the hillside retreat, while others may find references to the cult 60s puppet show Thunderbirds. Whatever your opinion, it is both commanding and impressive.

The whole estate can accommodate up to 22 people. The Estate House



boasts seven large luxuriously appointed air-conditioned bedrooms. There is now also an eighth room, a love nest located in the folly that rises out of the swimming pool, just perfect for newly weds. Each room is individually designed, and furnished with a four-poster bed and exquisite antiques, and comes with its own beautiful en suite bathroom. Continuing the Mount Hartman Bay Estate motif for fusing the modern with the antique, each bedroom also comes complete with a 42-inch flat screen cable television and a DVD player.

In addition to the Estate House, the thatched Beach House can accommodate eight people in four huge bedrooms, again all luxuriously appointed with the latest hi-tech gadgetry, stunning en suite bathrooms and king-size beds. Each bathroom features a glorious outside shower, which, with year-round temperatures in the 30s, is the perfect way to freshen up. Other facilities in the Beach House include a kitchen and a drawing room, with a 50-inch television and PlayStation and its own patio complete with swimming pool and beach. The Beach House can be hired in isolation from the Estate House, as both are self-contained with two separate entrances.

The Estate House features a vaulted Drawing Room, tastefully furnished with Indian and Chinese silk rugs and a mix of modern and antique furniture, including one of the largest collections of Biedermeier furniture in the world. There is a bar where house staff will mix you a tantalising Caribbean cocktail, such as 'Dark and Light', a lethal mixture of dark rum and light rum mixed and served over ice. There is an impressive separate dining area with panoramic views of the bay and space for seating 22 people around a grand dining table, handcrafted on site using purple heart wood and green Brazilian butterfly granite. Adjacent to the Drawing Room is the Library with a PC allowing access to the Internet and another 50-inch television, with a DVD library and PlayStation.

Eight permanent members of staff ensure that each guest's needs are fulfilled. Roger Williams, an award-winning chef trained by the chef to Prince Charles, is on hand to prepare all the meals. Try his Caribbean specialities using the island's finest fresh ingredients, or put him to the test with a favourite request from home. He will happily rise to any challenge. All drinks including champagne, wine and cocktails are included in the price.

The Estate's teak jetty leads to a private helipad. The old folly, which stands down from the house on its private peninsula, rises out of the swimming pool and adds further character to the surroundings.

The pool area features a 27m infinity pool with an adjoining Jacuzzi in which to unwind, and access to the beach. Gadgetry includes retractable awnings, which provide shade in the heat of day, with in-built vaporisers to keep guests cool.

Despite the myriad of distractions and facilities, this is the Caribbean, which means white sands and dazzling blue seas. Guests have exclusive use of the Estate's jet boat for wakeboarding or water-skiing, sea scooters for snorkelling over the reefs, a 43 ft motor cruiser to explore the more remote corners of this

paradise, and a pair of matching Shogun 4 x 4 to tour the island's lush rainforests.

The atmosphere at Mount Hartman Bay Estate is classically laid back. Guests are encouraged to take life easy and the service is fantastically discreet. The efficient and charming staff maintain a tactfully low profile but miraculously appear if you need something.

For most of the year Mount Hartman Bay Estate is available on an exclusive use basis for group bookings in the Estate House or the Beach House, or both together. During May and October each year individual couples can book a double room and join a houseparty.



HOW TO BOOK

One week taking Mount Hartman Bay Estate on an exclusive basis based on 22 people sharing starts from GBP £2,860 per person. Rates are per week and include return transfers from Point Salines Airport, all food, drinks (including champagne and wines), services of the chef, maître d'hotel, waiting staff, housekeeping staff, gardeners, boat captain, estate manager, two seven-seater four-wheel drives, 43' twin-engine motor cruiser, a water jet wakeboarding/ski boat, two sea scooters and 8% government tax.

It is also possible to hire the Estate House on its own, with prices from GBP £3,000 per person per week based on 14 sharing. Inclusions are as above.

The Beach House is available separately. Prices start from GBP £1,875 per person per week, based on eight people sharing. This includes 8% government tax, return transfers from Point Salines Airport, all food, wines/beers/soft drinks, services of the kitchen, waiting staff, housekeeping and one vehicle.

To book or for further information, call 08704 288 411. www.mounthartmanbay.com

GETTING THERE

British Airways operates a direct service from London Gatwick to Grenada once a week, www.ba.com

Virgin Atlantic also flies the same route once a week, with touchdown in Tobago but no change of aircraft, www.virgin-atlantic.com

Excel Airways (through Golden Caribbean) operates direct flights to Grenada from London Gatwick on Thursdays until mid-November, www.goldencaribbean.com

British West Indies Airways (BWIA) operates daily flights to Grenada from London Heathrow via Barbados, Antigua or Trinidad, www.bwee.com



MAGERIT
JOYAS



Copyright © MAGERIT JOYAS S.p.A. All rights reserved. May be copied.

www.mageritjoyas.com